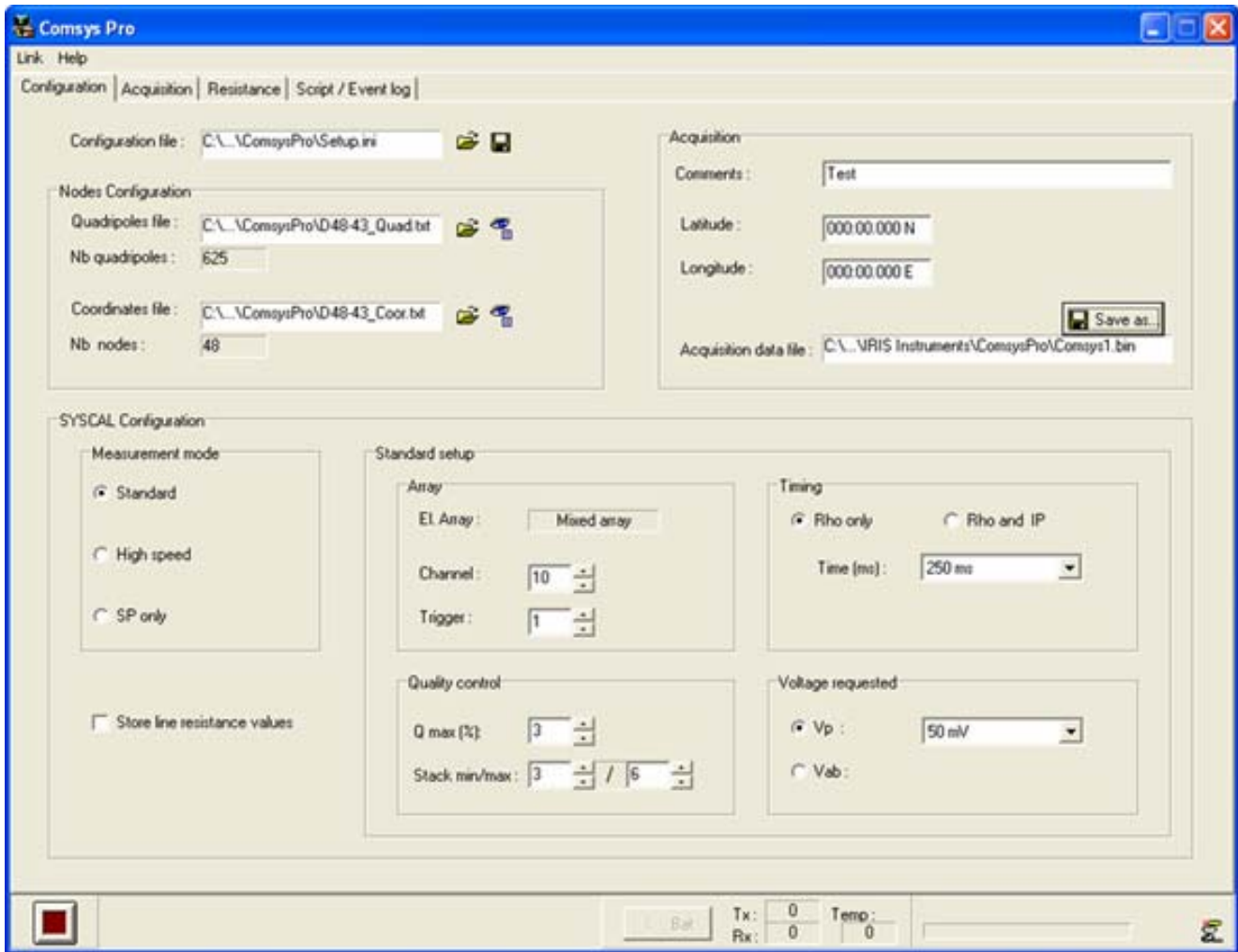


Syscal Pro Resistivity Monitoring(ERT) System

Turn Key System for Remote, Unattended Monitoring



The Syscal Pro is a ten channel resistivity meter with many standard features that allow it to function as a stand alone monitoring system, or with use of a local PC and optional software, as an unattended monitoring system. The system may be remotely accessed for data retrieval and system updates.

The Syscal Pro features high transmitting power, up to 1,000V, at a maximum 2.5A, and 250W. Power that is often needed for cross hole applications, and for the long arrays as may be needed to monitor large sites. It also offers two separate alarm times that may be scheduled during a twenty four hour period. Connection to an external modem is standard. The unit may be equipped with internal switches to support up to 192 electrodes. It will also support connection of external switching boxes supporting up to 4,000 electrodes. Thus, for many sites the Syscal Pro in its standard form may be quite adequate.

On sites that require more than one type of array to be run, or sites that may need array schedules that vary with day of the week, or some other schedule, a software package called ComSys is offered. ComSys permits the operator to schedule a specific array to be run at whatever time is needed. The Comsys package requires a local PC, which will also be the storage device. If the PC is set up on a network, then the Syscal Pro may be remotely interrogated, new arrays may be downloaded, and the sampling schedule may be revised.